

Energy HUB Firmware

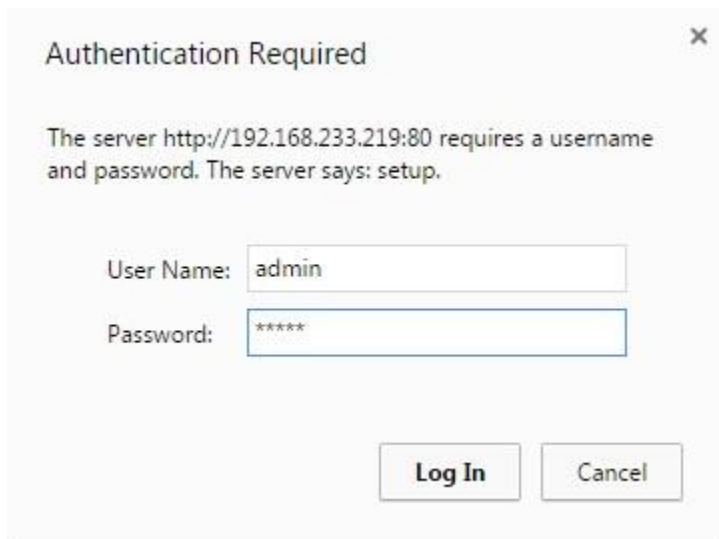
Updating Firmware

In order to begin, first ensure you have a computer that has access to the same network the HUB is on.

Access the HUB by opening a web browser and typing in the IP address of the device in the URL box at the top of the screen – The IP address will be displayed on the LCD screen of the HUB.



Once connected, you will be prompted to enter the Login and Password (default admin/admin)



From here, click on System on the left side of the screen to expand. Then select Firmware Version.

Firmware Version

Current Firmware Installed:

	Firmware Version
AcquiSuite Firmware version	v02.15.0226
usr apps version	v02.15.0226
root filesystem version	v02.15.0226
Linux kernel version	Linux 2.6.28.10-r1.92-ge055112
io processor version	v1.11

AcquiSuite Modules installed:

Vendor & Module Name:	Version:	Status:	Action (at next boot):
Obvius_AE3TLInverter [Obvius_AE3TLInverter.asmodule.cramfs]	v01.14.1219	Skipped Disabled per user request	Disable
Obvius_SmaInverter [Obvius_SmaInverter.asmodule.cramfs]	v02.14.0515	Skipped Disabled per user request	Disable
Obvius_SSLUpload [Obvius_SSLUpload.asmodule.cramfs]	v0.14.0610_3	Skipped Disabled per user request	Disable
AcquiSuite_RootCerts [AcquiSuite_RootCerts.asmodule.cramfs]	v0.13.0121_1	Skipped Disabled per user request	Disable

Check for Updates Now Check for and Install Firmware Updates: Every week
Last checked: Friday, Apr 17 2015 04:07:03 PDT

Have Disk Apply Cancel

The Firmware Version for AcquiSuite Firmware version; USR Apps version; & Root File System version should all be v02.15.0226. If your unit has this version of FW, you can skip below to Updating Module.

If the FW version is anything other than this, you will need to manually add the FW update before you can add the module. To do so, click on Have Disk at the bottom of the screen.

Have Disk - Firmware Upgrade

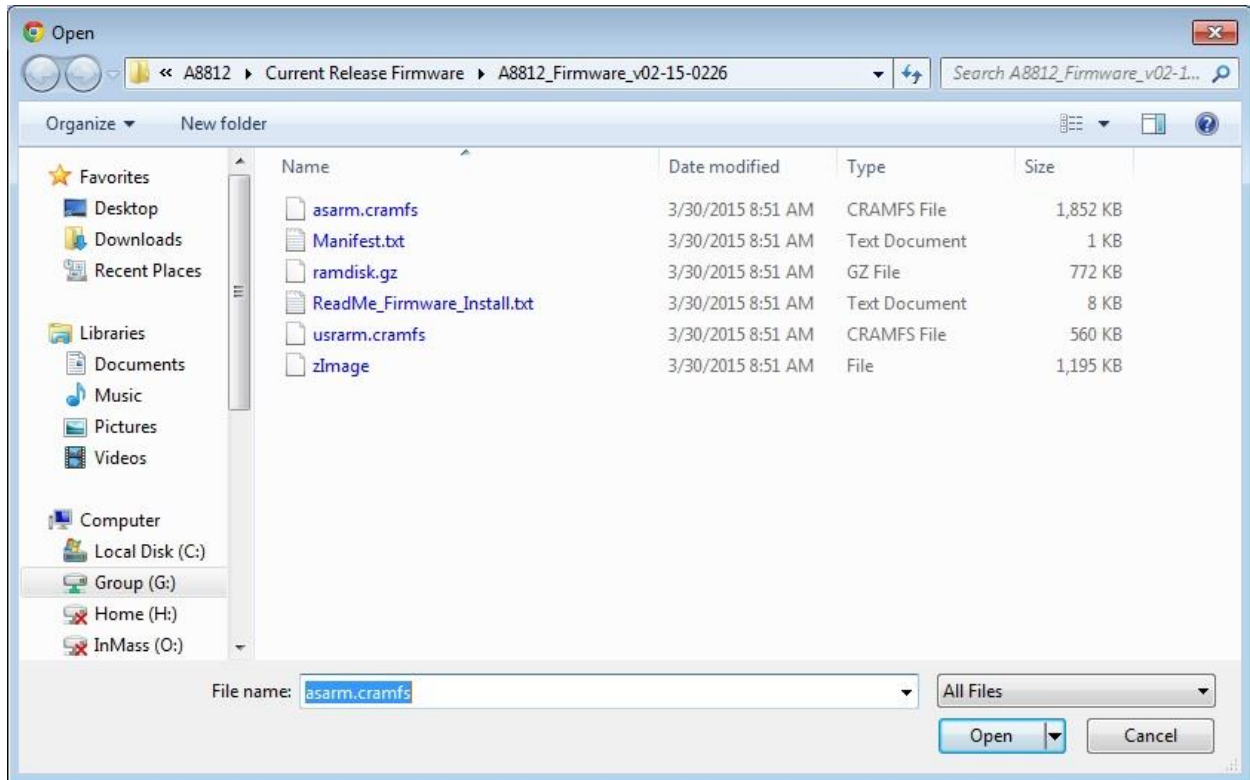
Choose File No file chosen (select Firmware file: asarm.cramfs, zImage, usarm.cramfs, ramdisk.gz, etc)

Choose File No file chosen (select Manifest.txt file)

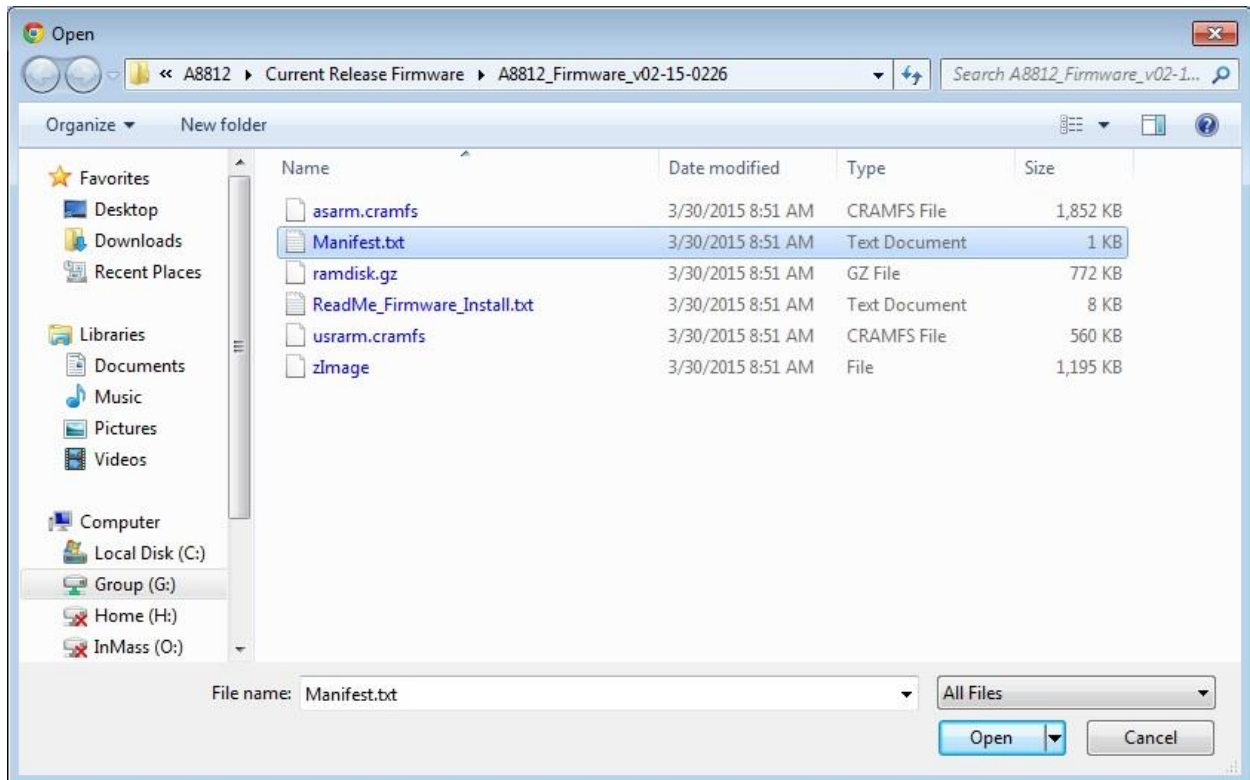
Submit

obvius
20497 SW Teton Ave, Tualatin, OR 97062
Ph: +1-503-601-2099 Fax: +1-503-601-6878

Select the first Choose File button that appears at the top, this allows you to browse you PC for the file. Locate the file on your PC, and select the file titled asarm.cramfs and click open



Click on the second Choose File button, again navigate to the folder with the latest FW, this time select the file titled Manifest.txt and click open.



Once both files have been selected (as shown below), click on Submit

Have Disk - Firmware Upgrade

Choose File asarm.cramfs (select Firmware file: asarm.cramfs, zImage, usrarm.cramfs, ramdisk.gz, etc)

Choose File Manifest.txt (select Manifest.txt file)

Submit

obvius
20497 SW Teton Ave, Tualatin, OR 97062
Ph: +1-503-601-2099 Fax: +1-503-601-6878

The unit will then verify that the file is not corrupt, and provide the following message. Click on Please Reboot, and the unit will reboot.

Have Disk - Firmware Upgrade

OS files have been successfully uploaded. [Please Reboot.](#)

Firmware filename is [asarm.cramfs].

Firmware version is [v02.15.0226].

Firmware file size is [1896448].

MD5Sum is [6fa696fa3442f8abb8cd89c0b00e2e09].

Checksum verified successfully

Cancel

Configuration files uploaded via FTP or Browser. [Please Reboot.](#)

obvius
20497 SW Teton Ave, Tualatin, OR 97062
Ph: +1-503-601-2099 Fax: +1-503-601-6878

Once the unit comes back on line, repeat the process for the usrarm.cramfs, ramdisk.gz, and the zImage files. Each time, remember to select the Manifest in the second Choose File button. The system will require a reboot after each upgrade. If the unit is an A8812 or A8814 there is an additional file that needs to be updated. Choose the hex file and manifest file in the units specific folder.