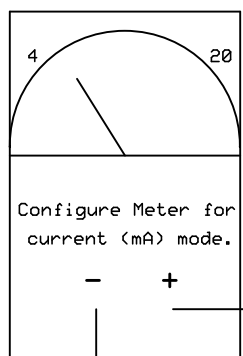


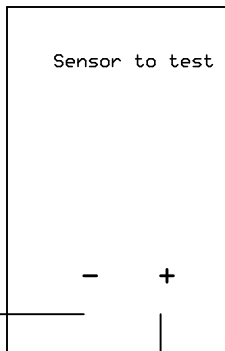
Technote 29: Testing 4-20mA Sensors

Note: some 4-20mA sensors are not polarity specific. These sensors may be tested without specific + and - hookup



Make note of the meter reading:

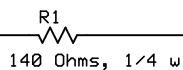
Meter reading: ----- mA



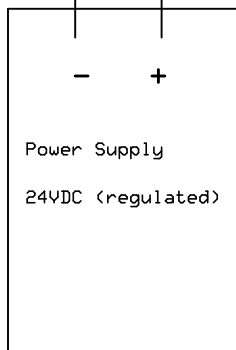
Make note of the sensor specifics:

Sensor Min: -----

Sensor Max: -----



Note: most sensors require a load resistor. The 140 Ohm resistor should work with most sensors, and matches the impedance of Obvius i/o modules. (130 - 160 Ohms may be used) Consult the sensor manufacturer for specific details on a load resistor value selection.



Formula to convert mA reading to Sensor value

$$\text{output} = (((\text{mA} - 4) / 16) \times (\text{sensMax} - \text{sensMin})) + \text{sensMin}$$

Obvius		
Testing 4-20mA sensos		
Herzog	Rev 1.1	Page 1
	Sep 25, 2009	