

Technote 20 – Using MSIE to FTP into an AcquiSuite

Author: Stephen Herzog
Copyright 2008, by Obvius Holdings LLC,
Revised: October 18, 2010

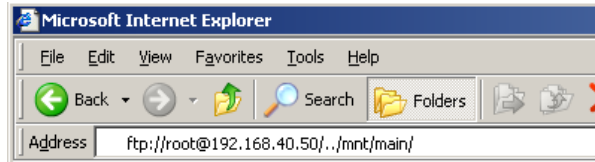
This document discusses the use of Microsoft Internet Explorer to FTP into the AcquiSuite. Other browsers such as Firefox should have similar behaviors, though may have different appearances.

Connect to the AcquiSuite

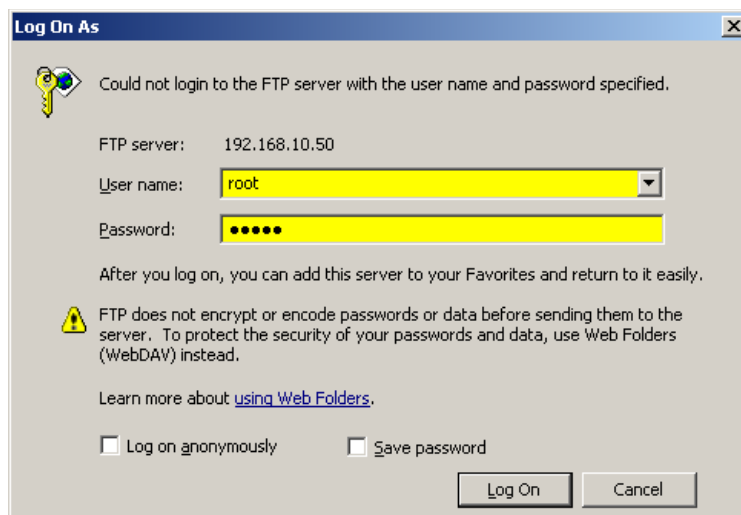
First, start Internet Explorer. In the address bar, type the following URL:

```
ftp://root@192.168.40.50/./mnt/main/
```

Substitute the IP address of the AcquiSuite with the one shown above. The “./.” is important; don't skip this part of the URL.



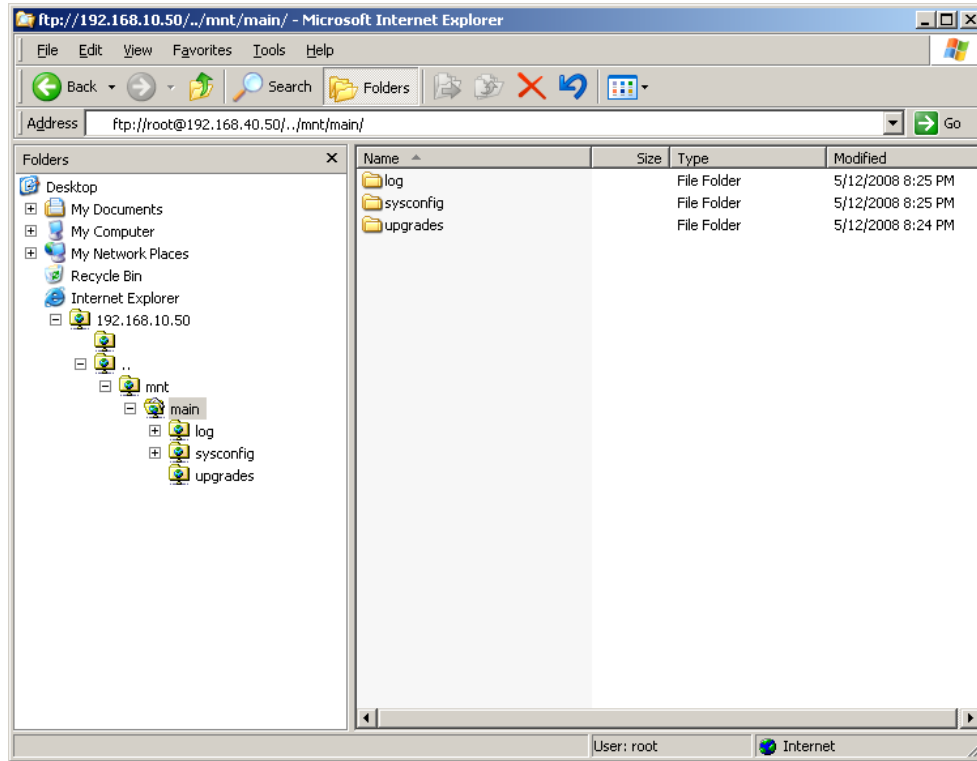
Note the use of the username “root” in the address bar. This will be used as the login name.



When connecting, you will be prompted for a password. Use the admin password.



Next, click the folders button on the tool bar. This will expand the folder menu show on the left side of the screen shot below.



Internet Explorer is now connected to the AcquiSuite for FTP access. This will allow read and write access to several directories. These are as follows:

- **log**: system log files. *Do not delete these*
- **log/modbus**: log data from attached Modbus devices.
- **sysconfig**: system configuration files. *Do not delete these*
- **sysconfig/modbus**: configuration files for attached Modbus devices or added Framework templates (.mbt files).
- **sysconfig/curvescale**: configuration files for curve fit templates (thermistors, etc)
- **upgrades**: location for firmware upgrade files.

Warning: FTP will allow access to the configuration files of the AcquiSuite. Do not delete the configuration files, as this may cause the AcquiSuite to revert to its default settings.

Uploading Firmware

Obvius releases firmware updates for the AcquiSuite about every 3 to 6 months. These updates include new features and enhancements that are provided free of charge. If using the online update tool from within the AcquiSuite System/Firmware menu is not possible, you can upload firmware using FTP. You must obtain the firmware update from Obvius Technical Support Team before beginning. Included in the firmware package will be an important README file that provides information including the filesize and MD5 Checksum for the firmware.

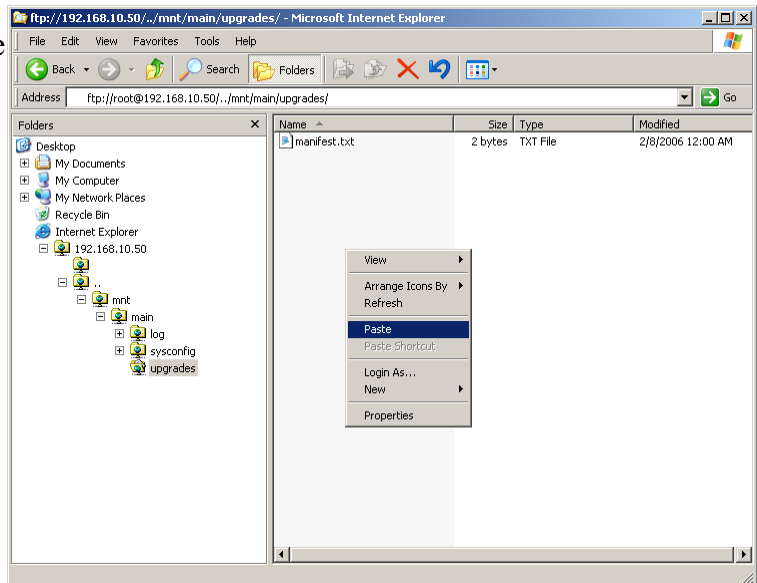
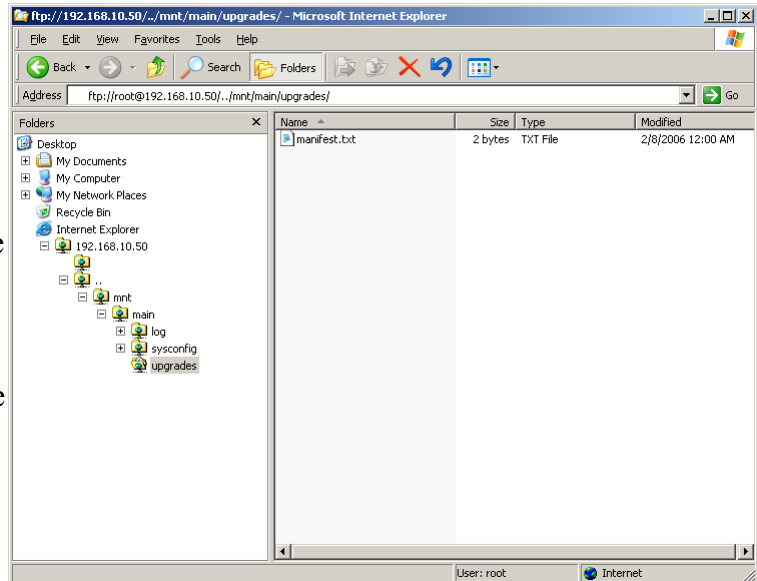
Once you have the firmware located on your computer or laptop hard drive, connect to the AcquiSuite using the URL shown in the previous section. Next, double click on the folder called “upgrades”

Open the file folder on your computer where the firmware image is stored. For example, C:\temp. Locate the firmware image file, e.g. asarm.cramfs. Right click the file icon and select “properties”. Review the file size, and verify the size matches the size given in the firmware readme file. Do not proceed if the file size does not match.

Next, right click the file, and select the option “copy”.

Select the MSIE FTP window (shown to the right). Right click in the right side panel of the window and select paste.

The firmware file will be copied to the AcquiSuite.

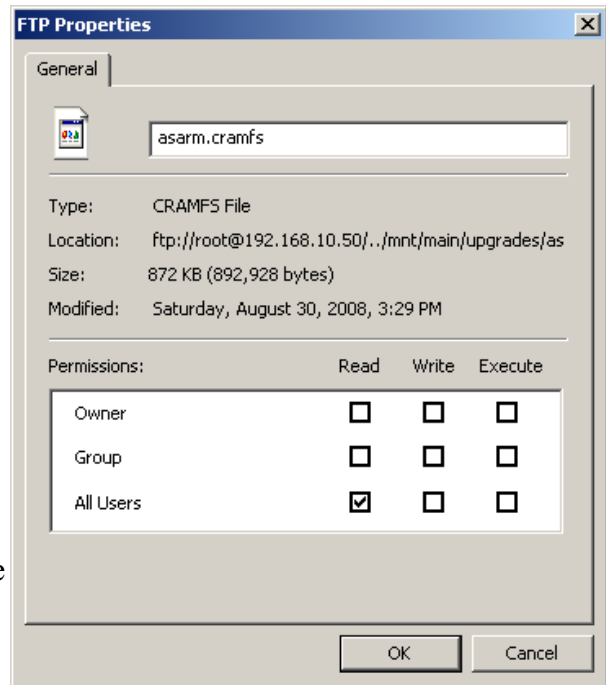


When complete, right click the firmware image in the MSIE ftp window, and select properties. The dialog box to the right will be shown.

Make note of the file size line, such as 892,928bytes in the example. This file size **MUST** match the file size in the readme.txt file provided with the firmware.

If the file size does not match, you must delete the firmware image from the AcquiSuite. Right click the firmware image file (asarm.cramfs) in the MSIE FTP window and select the option for “delete”.

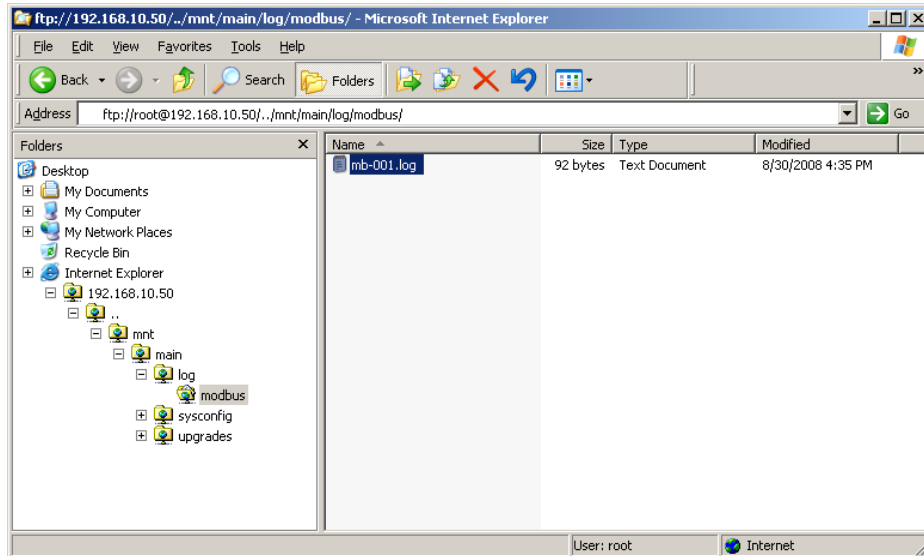
If the file size matches the one provided in the readme file, you must reboot the AcquiSuite to install the firmware image. Use the web browser to connect to the AcquiSuite configuration menus (<http://>) Expand the System menu on the left side of the screen and select the status page. On the bottom of the status page, click the reboot button.



Downloading log files

AcquiSuite log files can be downloaded individually using FTP.

To access log files, first connect to the AcquiSuite as shown at the beginning of this document. Next, double click on the “log” and then the “modbus” folders as shown below.



In the `/mnt/main/log/modbus` folder, you will find the log files for all log files for all Modbus devices. To retrieve one, right click the log file and select “copy to folder”

The files that end in “.log” are the current log data files. Files with “.gz” are older compressed files

Note: each day, the AcquiSuite rotates the log files. This process takes the current log file, renames it, and then uses gnu zip compression to reduce the file size. There may be many log files for each device.

Deleting log files

Follow the directions above to view the log files in the AcquiSuite.

You can click the “modified” column title to sort the files by age. This is helpful if you wish to delete the oldest log files first.

Right click the log file, and select the “delete” option.

